

**Seaforth Avenue
Motspur Park, KT3 6JU**

£925,000 Freehold



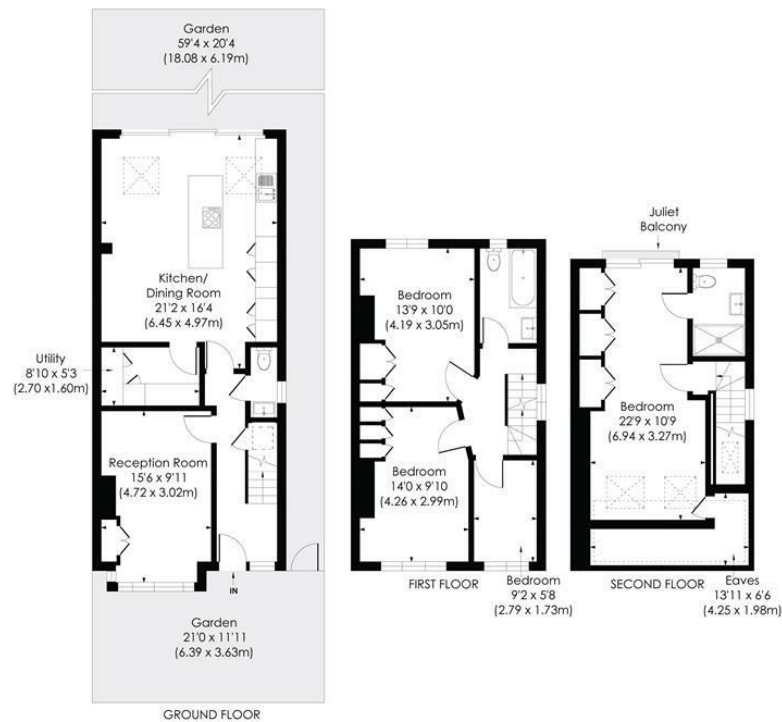
This beautifully presented 1,440 sqft FOUR BEDROOM, TWO BATHROOM, Edwardian Semi Detached house has an fantastic extended principal bedroom with en-suite and an exceptional, extended open plan kitchen/dining/family room with utility room and sliding doors onto a 59ft South Facing Garden. Perfectly located for Motspur Park Station, Shops and Amenities. The is also and attractive entrance hall, a downstairs W.C, a lovely separate front reception room, a modern family bathroom and useful side access.

SEAFORTH AVENUE, KT3

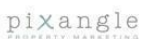
Approx. Gross Internal Floor Area

1440 Sq. ft/133.86 Sq. m (Including Eaves)

1359 Sq. ft/126.21 Sq. m (Excluding Eaves)

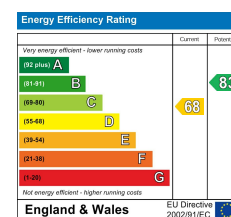


© Pixangle Property Marketing Ltd. info@pixangle.com Tel: 0208 870 2118



This floor plan has been prepared for the purpose of illustration only in accordance with the latest RICS code of measuring practice and is not to scale. All measurements and areas are approximate and whilst every effort has been made to ensure the accuracy of the plan contained here, no responsibility is taken for any error, omission or misstatement.

- Four Bedroom - Two Bathroom
- 1,440 sqft Edwardian Semi Detached House
- 59ft South Facing Garden with Side Access
- 0.2 Miles to Motspur Park Station - Links to Waterloo
- Downstairs W.C and Separate Utility Room
- Exceptional Open Plan Kitchen/Dining/Family Room
- Superb Principal Bedroom with En Suite
- Beautifully Presented Throughout
- EPC - D
- Council Tax Band - D



For Free Mortgage Quote and Best Mortgage Rates, call Ellisons Mortgage Advisor on 0208 944 9595



Although these particulars are believed to be correct, their accuracy is not guaranteed and they do not form part of any contract.

Celebrating 30 years of successful Sales and Lettings in Merton

